



MATTHEW JAMES
Property Services



88 Alfall Road

Stoke Heath, Coventry, CV2 3GG

£159,995



88 Alfall Road

Stoke Heath, Coventry, CV2 3GG

£159,995



GROUND FLOOR

Lounge Area

12'5" x 11'5" (3.8 x 3.5)

Dining Area

11'5" x 11'1" (3.5 x 3.4)

Kitchen

10'2" x 4'7" (3.1 x 1.4)

Sun Room

9'10" x 6'10" (3 x 2.1)

Cloakroom WC

FIRST FLOOR

Bedroom One

12'9" x 11'10" (3.91 x 3.63)

Bedroom Two

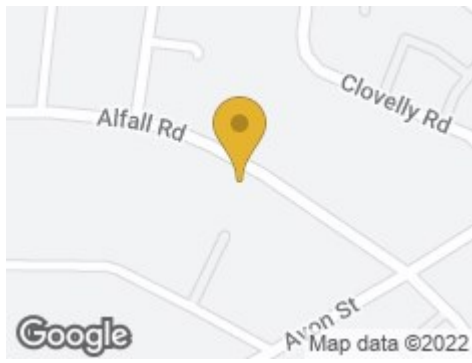
10'11" x 9'8" (3.35 x 2.95)

Family Bathroom

6'5" x 5'10" (1.96 x 1.79)



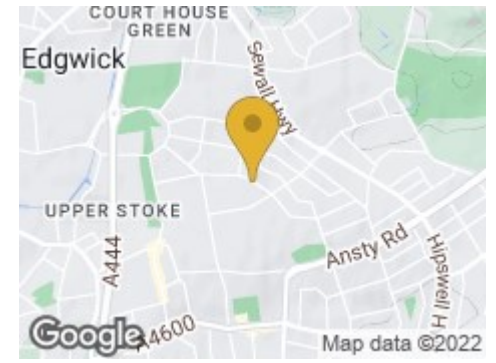
Road Map



Hybrid Map



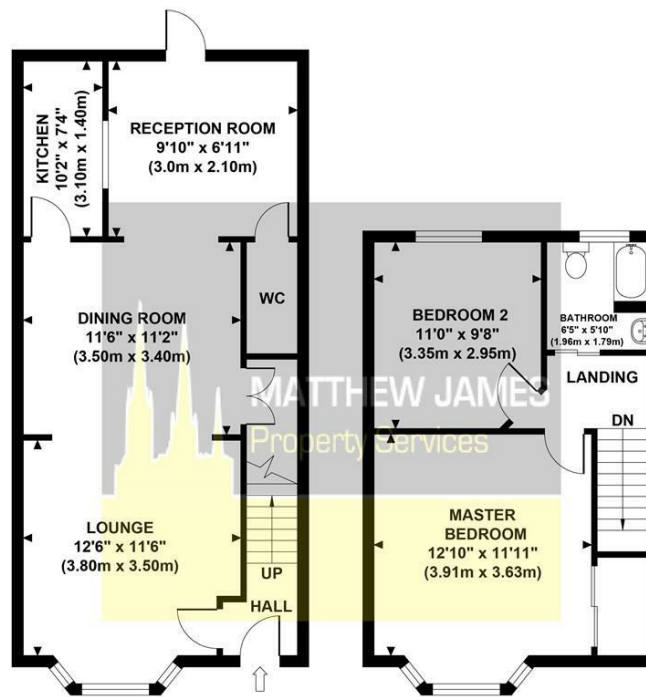
Terrain Map



Floor Plan

ALFALL ROAD

Approximate Gross Internal Area 947 sq ft / 88 sq m



GROUND FLOOR
GROSS INTERNAL
FLOOR AREA 557 SQ FT

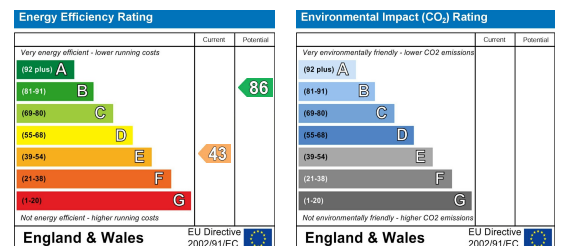
FIRST FLOOR
GROSS INTERNAL
FLOOR AREA 390 SQ FT

Although every attempt has been made to ensure accuracy, all measurements are approximate and no responsibility is taken for any error, omission, or mid-statement. This floor plan is for illustrative purposes only and not to scale. Measured in accordance to RICS standards.

Viewing

Please contact us on 02477 170170 if you wish to arrange a viewing appointment for this property or require further information.

Energy Efficiency Graph



These particulars, whilst believed to be accurate are set out as a general outline only for guidance and do not constitute any part of an offer or contract. Intending purchasers should not rely on them as statements of representation of fact, but must satisfy themselves by inspection or otherwise as to their accuracy. No person in this firm's employment has the authority to make or give any representation or warranty in respect of the property.

CONTACT INFORMATION

📍 24a Warwick Row, Coventry CV1 1EY

☎ 02477 170170

✉ info@matthewjames.uk.com

🌐 www.matthewjames.uk.com

📘 Facebook

🐦 Twitter